

you can
Canon

iR5055N
iR5065N
iR5075N
Multifunctional Printer

High speed document
communication throughout
your office

Multifunctional.

Productive printing.



iR5055N / iR5065N / iR5075N

Document communication with real power

Canon's iR5055N, iR5065N and iR5075N are a range of high-end multifunctional printers that enhance the way you create, share and distribute documents throughout your organisation. User-friendly and designed to maximise productivity, each printer can be equipped with an impressive range of finishing options that give communication an added edge. A range of management facilities ensure cost control and security stay high on your agenda.

Powered for busy workloads.

Keep information secure.



Achieve the highest productivity

Free up office space by replacing numerous separate devices, with one that outperforms them all. With the iR5055N, iR5065N and iR5075N you can print, copy, fax, scan or send documents using a single, multifunctional device that processes numerous jobs simultaneously. The benefits include:

- High-speed printing performance up to 75ppm
- Enhanced print quality
- One-pass duplex system, almost double the speed of conventional scanning, enabling 100 impressions per minute.
- Professional finishing capabilities including C folding, ideal for mailshots
Z folding, ideal for large excel sheets

Protect your assets

Information is a key business asset and Canon helps you keep it secure via a range of security solutions:

Document and Hardware Security

To prevent unauthorised access to the iR5055N, iR5065N and iR5075N a variety of user authentication options is available, these include:

- Passwords
- Users' network log-in procedure
- User ID cards
- Fingerprint recognition



To further enhance document protection, users can:

- Keep documents held securely in mailboxes until the relevant user is ready to print them at the device. This prevents sensitive information being left on the output tray
- Encrypt documents before sending, so if intercepted by hackers they cannot be viewed
- Enable the secure watermark option which is embedded into a printed document, becoming prominent when someone attempts to make a copy.

Confidential documents sent to print



If document is copied, watermark becomes visible



Network and Data Security

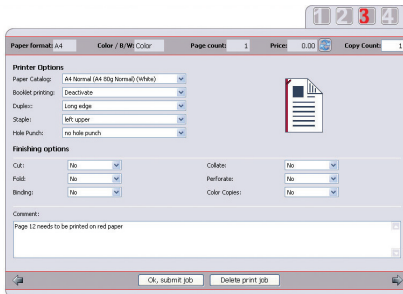
To minimise the threat of external hacking Canon offers:

- Network authentication tools so that only authorised PCs or Macs can communicate with the printer
- Security kits which erase and/or encrypt data on device hard disks, and conceal "job logs". The data encryption option has been awarded the Common Criteria level 3 (EAL3) certification for an internationally recognised standard

Cost effective, controllable printing

Using both sides of paper is not only cost-effective, it adds a professional touch to your business communication. Incorporate Canon's optional uniFLOW software and you can take printing knowledge and cost management to whole new levels. uniFLOW provides an ongoing and detailed insight into who is printing what, where, and how much it's costing you. It also allows you to automatically redirect prints to the most cost-efficient device on the network or to control the output levels of each department. This makes budgeting easier and helps you to realise a clear return on your investment.

Powered for busy workloads



uniFLOW software

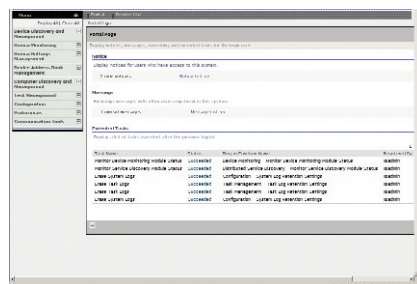
Effortless IT management

Keep information secure

Canon's iR5055N, iR5065N and iR5075N come "network-ready" so installing on your network is a simple task.

iW Management Console (iWMC) is a

web-based utility that facilitates centralised management of networked devices – ideal for busy IT departments. This standard feature enables remote management of device settings, discovery of new devices using automated tasks, and device error notifications via email. Emails can indicate low toner, paper jams, and device maintenance problems so they can be dealt with easily and quickly, ensuring minimal downtime. iWMC also allows administrators to replicate settings and address books across multiple devices.



iWMC Main portal

Using Canon's optional e-Maintenance system, device problems can be automatically reported, so there's no need to worry about constant monitoring.

Making deployment simple for users

An identical user interface is shared across each device and also with Canon's office colour devices and other black and white multi-functional printers. This makes multiple device deployments throughout your company quick to administer and enables users to effortlessly switch between one device and another.

The multifunctional printer that does everything you need

In business it's great when you can really depend on someone to get the job done. That's the way to think about the iR5055N, iR5065N, and iR5075N. One powerful MFP, it allows you to print, copy, fax, scan, and send information easily and quickly, with the quality needed to make your document communication really stand out.

Deadline-beating performance

The iR5075N prints and copies at a super-quick 75 pages per minute making it ideal for busy departments producing significant

75 pages
per minute

quantities of documents or as the heart of centralised production facilities in large organisations.

The iR5065N and iR5055N are powerful devices running at 65 and 55 pages per minute respectively. Each model comes network ready. Printing is carried out using industry standard PCL or Canon's unique UFR II for enhanced network processing speeds. Additionally, emulated and true Post Script options are available if required.

A simple-to-use interface means sophisticated print jobs can be undertaken from users' desktops. A large colour touch screen makes operation at the device equally simple.



Hole Punched



Saddle Stitched Booklet



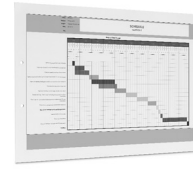
Z Fold



C Fold



A3 Landscape Hole Punched



High quality printing

High quality document communication becomes the norm using the iR5055N, iR5065N and iR5075N with crisp, clear prints at a superb 1,200 dpi. You can finish documents with the type of professional finish that you might not expect possible without sending to a local print shop. Documents can be 'Z' folded or even 'C' folded, giving a raft of different ways to present your work in a way that will get them, and you, noticed. A document insertion device allows you to insert heavier stocks up to 256 gsm – perhaps coloured dividers produced on another device – into your workflow for added professionalism. Impactful booklets are easy to create, as well as hole punched and stapled reports, and all using a variety of media types and sizes.

Superb quality

Add Canon's iWPM software and add further professionalism. When you want to create a report combining information from different files - such as Word or Excel – normally you need to print them first and then manually collate, which is time consuming. iWPM however lets you carry out the collation quickly and electronically at your desktop, prior to printing a completed version.

Quick and effective communication

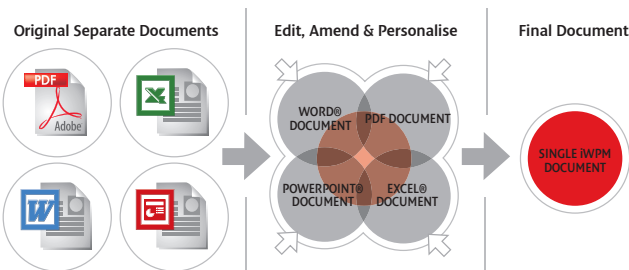
Each device incorporates Canon's new "one-pass" duplex scanner which allows document scanning at an incredible 100 impressions per minute. This allows you to scan large documents via the feeder and dispatch them as PDFs using Canon's i-Send to locations such as network folders, email addresses and mailboxes. They can even be encrypted too for added peace of mind.



Mailbox

Added convenience with mailboxes

The iR5055N, iR5065N and iR5075N incorporate mailboxes for added versatility and confidentiality. Mailboxes act as secure storage at the device for all documents, and can be established for individuals and groups of users. Any document can be scanned, sent to, or printed directly from a mailbox at your convenience – handy if you don't want a confidential report lying around before you have a chance to retrieve it. You can also preview documents in your mailbox at the device before printing.



iW Publishing Manager

Instant communication.

Software for added value.

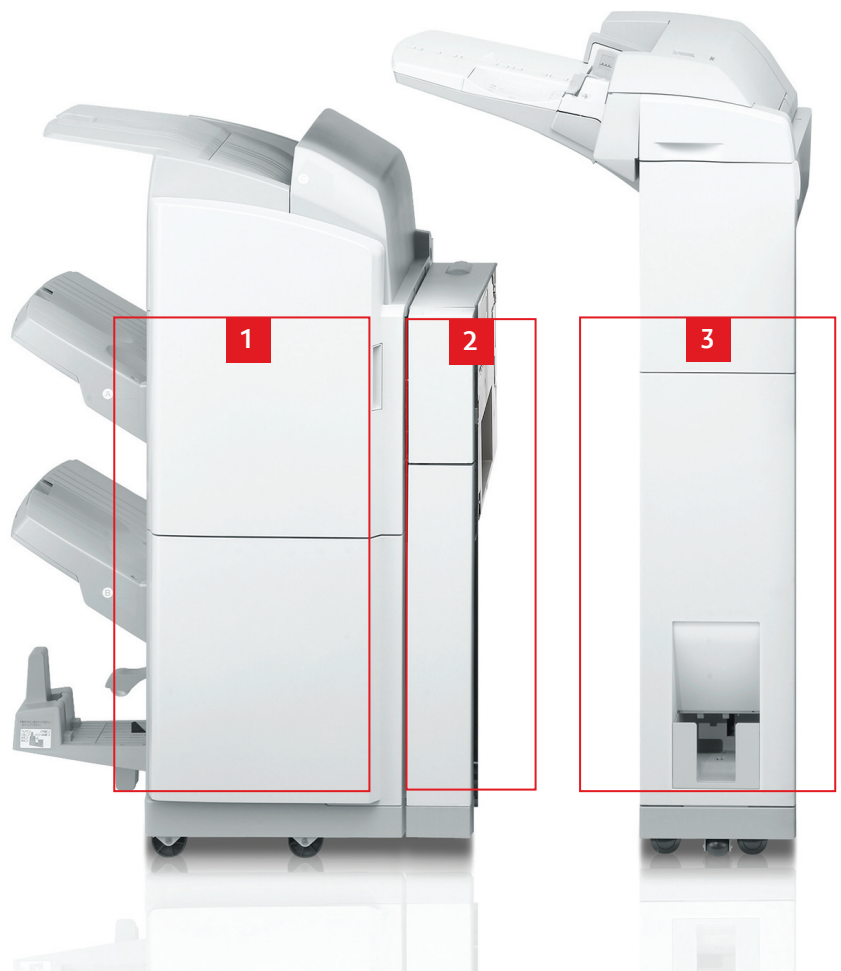
A solution that matches your needs and budget constraints

Three powerful printers and a number of different configuration options means there's a solution that fits your needs now and that can grow as your business grows in the future.

Whatever you need.

For heavy workloads.

- 1** Saddle finisher AD2 – optional
- 2** Hole puncher – optional
- 3** Insertion / Folding unit – optional
- 4** One Pass Duplex Scanner/ Document feeder (100 sheets)- Standard
- 5** Advanced environmental approach/Future proof
- 6** Standard Paper cassettes (2 x 1500 sheets)
- 7** Standard Paper cassettes (2 x 550 sheets)
- 8** Paper deck A4/A3 (3500 sheets) – optional*



* Only one paperdeck option can be configured at any one time.

1 Professional finishing

To create the most professional-looking documents, turn to the Saddle Finisher AD2. With it you can produce automatically folded 60 page booklets, using 15 sheets with no more than a few simple mouse clicks – all from the comfort of your desktop. It's even possible to create booklets up to an impressive A4 in size. Add Canon's iWPM, and you can combine information from different sources to create business reports and detailed project plans.

2 Hole Puncher

The hole puncher provides 2 or 4 holes.

3 Insertion/Folding unit

The document inserter allows you to insert pre-printed sheets of up to 256 gsm from additional sources into your finished documents as well as providing a variety of folding options. You can 'Z' fold A3, A4R media and 'C' fold A4R.

4 One Pass Duplex Scanner/Document Feeder

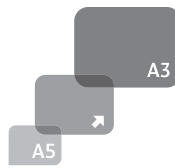
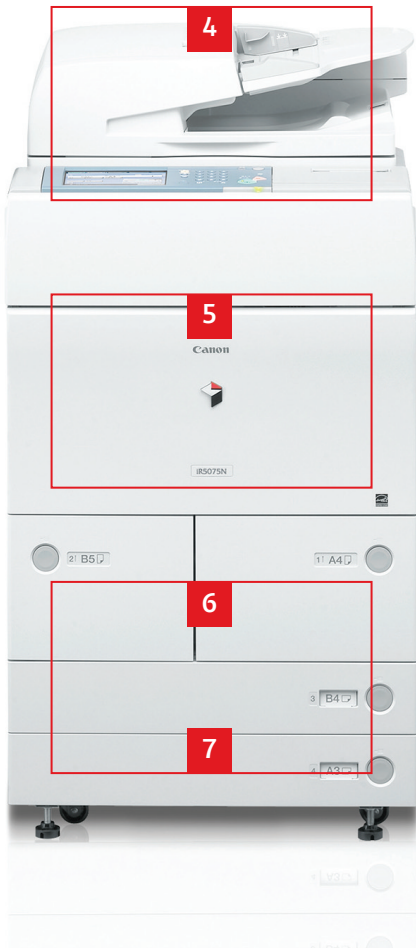
A 100 sheet document feeder employs single pass duplexing allowing images to be scanned at 100 impressions per minute and accommodates different sized pages. Using the image reader and Canon's Universal Send feature enables you to scan documents and send them instantly to email addresses, mailboxes and network folders.

5 Advanced environmental Approach/Future Proof

The device adheres to the strictest environmental standards such as RoHS, which restricts the use of hazardous substances.

Using MEAP (Multifunctional Embedded Application Platform), Canon's device-embedded Java based application platform, enables new and customised software to be incorporated directly within your device. This way your investment keeps pace with the very latest in office communication technology.

Stand-by power consumption: 1w



6 7 8 Expansive paper supply

Combine all paper sources for a maximum total of 7,650 sheets providing huge versatility from 6 different sources. The optional paperdeck allows you to configure a variety of paper sizes to cope with heavy workloads up to A3.



Specifications iR5055N / iR5065N / iR5075N

<p>Type Maximum Original Size Copy Sizes</p> <p>Resolution</p> <p>256 Gradations Copy/Print Speed</p> <p>Enlargement/Reduction Zoom</p> <p>Fixed Zoom Ratio First copy time Warm-Up Time</p> <p>Multiple Copies/Prints Duplexing</p> <p>Paper weight</p> <p>Paper Capacity (80 gsm) Standard</p> <p>Optional</p> <p>CPU</p> <p>Memory</p> <p>Hard Disk Drive</p> <p>Interface</p> <p>Power Supply</p> <p>Power Consumption(W) Dimensions (W x D x H) Installation space (W x D) Weight</p>	<p>Console A3 Cassette 1, 2: A4 Cassette 3, 4: A3 to A5R Stack Bypass: A3 to A5R, Free size (99 x 148 to 297 x 432)</p> <p>Scanning: 600dpi x 600dpi Copying: 1200dpi equivalent x 600dpi Printing: 1200dpi x 1200dpi</p> <p>A4: 55ppm(iR5055N), 65ppm(iR5065N), 75ppm(iR5075N) A3: 32ppm(iR5055N,iR5065N), 37ppm(iR5075N) A4R: 40ppm(iR5055N), 47ppm(iR5065N), 54ppm(iR5075N) A5R: 35ppm(iR5055N,iR5065N,iR5075N)</p> <p>25 - 400%</p> <p>25%, 50%, 70%, 100%, 141%, 200%, 400%</p> <p>3.3 seconds(iR5055N,iR5065N), 3.1 seconds(iR5075N)</p> <p>30 sec max</p> <p>1 to 9,999 sheets</p> <p>Standard</p> <p>Cassettes: 64 to 200 gsm Stack Bypass: 64 to 200 gsm</p> <p>1,500 sheets x 2 Cassettes (3,000 sheets) 550 sheets x 2 Cassettes (1,100 sheets) Stack Bypass : 50 sheets</p> <p>Side paper deck : 3,500 sheets Max paper capacity : 7,650 sheets 533MHz/400MHz</p> <p>1GB 40GB</p> <p>Ethernet (100Base-TX/10Base-T), USB</p> <p>220-240V 10A 50/60Hz 2.3kW Max.</p> <p>643 x 743 x 1,207mm 1,335 x 743mm Approx.220kg</p>	<p>PAPER DECK-AD1 (OPTIONAL) Paper Size Paper Weight Paper Capacity Dimensions(W x D x H) Weight</p> <p>PAPER DECK-AE1 (OPTIONAL) Paper Size Paper Weight Paper Capacity Dimensions(W x D x H) Weight</p> <p>FINISHER-AD1 / SADDLE FINISHER-AD2 (OPTIONAL) Number of trays Tray capacity (Non Collate)</p> <p>Staple position Staple capacity(64-80 gsm) A3/A4R: 30 sheets Saddle Stitch Specifications (Saddle Finisher-AD2 only)</p> <p>Dimensions Weight</p> <p>DOCUMENT INSERTION/ FOLDING UNIT-F1 (OPTIONAL) C-Fold Z-Fold Output Capacity of C-Fold Document Insertion unit</p> <p>Dimensions Weight</p> <p>Other OPTIONAL Accessories</p>	<p>A4 64 to 200 gsm 3,500 sheets (80 gsm) 323 x 583 x 574 mm Approx. 29.8 kg</p> <p>A3,A4 and A4R 64 to 200 gsm 3,500 sheets (80 gsm) 598 x 621 x 574 mm Approx.45.1 kg</p> <p>3 trays Tray A: A4/A5R 250 sheets, A3/A4R 125 sheets Tray B: A4/A5R 1,300 sheets, A3/A4R 650 sheets Tray C: A4 2,450 sheets, A5R 1,700 sheets, A3/A4R 650 sheets Corner, Double, Saddle Stitch (AD2 only) A4: 50 sheets</p> <p>Paper size: A3, A4R Staple capacity: 15 sheets (60pages, 64-80 gsm) Paper weight: 64 to 90 gsm AD1 646 x 656 x 1121mm AD2 649 x 656 x 1121mm AD1: Approx.48kg AD2: Approx.70.5kg</p> <p>Paper Size: A4R Paper Weight: 64 to 105 gsm Paper Size:A3, A4R Paper Weight: 64 to 105 gsm 40 sheets Size: A3, A4, A4R Weight: 60 to 256 gsm Capacity: 100 sheets (80 gsm) 662 x 679 x 1242mm Approx.76kg</p> <p>Network Multi-PDL Printer Unit-S2, Hot Folder Ver2, Impose Ver2.6 Roman 1, Expansion Bus-D2, Barcode Printing Kit - A1, Web Access Software-F1, Secure Watermark-A1, Encrypted Printing Software-C1, HDD Data Erase Kit-A1, HDD Data Encryption Kit-B2, Universal Send Searchable PDF Kit-A1, Universal Send PDF Security Feature Set-A1, Digital User Signature PDF Kit-A1, Super G3 FAX Board-Z1, Tab Feeding Attachment-A1, Stamp Unit-B1, Stamp Ink Cartridge - C1 GP, Paper Folding Unit -E1, Puncher Unit - AS1, Puncher Unit - AU1, Copy Tray-L1, Staple Cartridge - J1 GP, Staple Cartridge-D3 GP, Cassette-AB1, Card Reader - C1, Card Reader Kit - C2, Document Tray-M1, ADF Access Handle-A1, Remote Operators Software Kit-A2, Voice Guidance-B1 (English)</p>
<p>UFRII/PCL PRINTER KIT-R1 (STANDARD) PDL Resolution Memory Hard Disk CPU PCL Fonts Supported OS</p> <p>Interface Network Protocol</p> <p>Pull Scan</p>	<p>PCL5e, PCL6 and UFR II 1200dpi x 1200dpi 1GB 40GB (Uses Main unit HDD) 533MHz/400MHz (Uses Main unit CPU) Roman80, Bitmap1 PCL: Windows 98/Me/2000/XP/Server 2003/Vista UFR II: Windows 2000/XP/Server 2003/Vista, Mac OSX 10.2.8 or later Ethernet(100Base-TX/10Base-T), USB TCP/IP(LPD/Port9100/IPP/IPPS/SMB/FTP), IPX/SPX(NDS, Bindery), AppleTalk Network TWAIN Driver (75 to 600dpi /Black & white/Halftone)</p>		
<p>PS PRINTER KIT R1 (OPTIONAL) PDL PS Fonts Supported OS</p>	<p>PostScript3 Emulation Roman136 Windows 98/Me/2000/XP/Server 2003/Vista, Mac OSX 10.2.8 or later, Mac-PPD: Mac OS 9.1 or later, Mac OSX 10.2.8 or later</p>		
<p>UNIVERSAL SEND KIT F1 (OPTIONAL) Scan Resolution Destinations Address book File Format</p>	<p>100dpi,200 x 100dpi,200dpi,200 x 400dpi,300dpi,400dpi,600dpi E-Mail/Internet FAX(SMTP), PC(SMB,FTP,NCP), iWDM LDAP, Local(Max.1800) Single: TIFF, PDF Multi: TIFF, PDF</p>		
<p>DOCUMENT FEEDER (STANDARD) Paper size Paper weight</p> <p>Max. Number of originals Document Scanning speed (A4/max.)</p> <p>Dimensions (W x D x H) Weight</p>	<p>A3-A5R Single sided original: 42 to 128 gsm Double sided original: 50 to 128 gsm 100sheets (80 gsm)</p> <p>Copy: 77ipm Scan: 77 ipm 300dpi, 100 ipm 300dpi with 1 Pass Duplex Scan Approx. 615 x 560 x 166mm Approx. 20.2kg</p>		
<p>Some images are simulated for clarity of reproduction. All data is based on Canon's standard testing methods. This leaflet and the specifications of the product have been developed prior to the date of product launch. Final specifications are subject to change without notice.™ and ©: All company and/or product names are trademarks and/or registered trademarks of their respective manufacturers in their markets and/or countries. Canon Recommends you use Canon Media for the best results. Please check media (paper) compatibility list to see which variety of paper/media is recommended. Canon's GENUINE logo means Quality all-round performance. For more information, go to www.canon-europe.com/Canon_Copier_Consumable_Technology</p>			



Conforms to the International Energy Star program as an MFP and Copier



Canon's GENUINE logo means quality all-round performance



POWERED BY

you can
Canon

Canon Inc.
www.canon.com

Canon Europa N.V.
www.canon-europe.com

English UK Edition 0101W339
© Canon Europa N.V., 2007 (0607)

Canon (UK) Ltd
Woodhatch, Reigate
Surrey RH2 8BF
Telephone No: 08000 353535
Facsimile No: 01737 220022
www.canon.co.uk

Canon Ireland
Arena Road, Sandyford
Industrial Estate
Dublin 18, Ireland
Telephone No: 01-2052400
Facsimile No: 01-2958141
www.canon.ie

